

iJetColor™ Press Performance Bundle

iJetColor Press Benefits

- **Low Total Cost of Ownership**
1/3 the operating cost of typical toner devices
- **High-Performance**
3 times the speed of typical toner devices
- **Flexible Paper Handling**
Stock thickness up to 160#/430 grams including full bleed #10 envelopes
- **Production Ready**
Production-quality Navigator Harlequin RIP workflow with spot color matching software
- **Environmentally Friendly**
Lower energy consumption, smaller carbon footprint
- **Easy-To-Use Setups**
Integrates with existing production environment
- **Quick Return on Investment**
Less than one year with moderate output volumes

The iJetColor Press Performance Bundle, powered by Memjet® and perfected by Printware®, includes everything a printer needs to print 4-color personalized envelopes, direct mail and short-run letterhead profitably in volumes as low as one. **The performance bundle features:**

- iJetColor Press Print Engine
- iJetColor RIP and Workflow
- iJetColor Spot Color Matching/Correction Software
- iJetColor Variable Print Utility
- Volume Output Conveyor
- Supply Starter Kit (printhead + 250ml iJet ink CMYK)
- Workflow/Computer
- Printer work station table

Advanced print technology usually demands a premium price, but not so with the Printware iJetColor Press. With a print speed three times that of traditional toner devices, the iJetColor Press inkjet consumables are roughly one-third the cost, offering extremely competitive pricing to bring the lowest cost per piece to the commercial printing market.



- Full Bleed Capability
- No Creasing or Embossing
- Uses Standard Window Envelopes

• New Color BoostSM Technology

With Printware's new Color Boost color profile you get the brightest most vivid colors possible

• New High Speed Variable Data

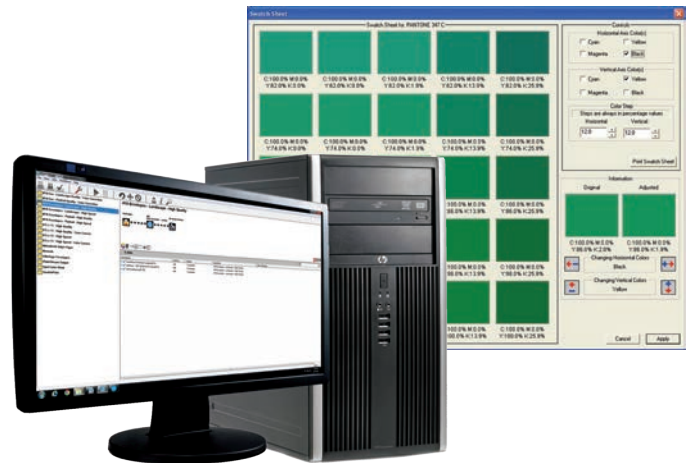
With the new rendering engine variable data jobs are processed up to 10x faster allowing for increased productivity

• New Enhanced Version 10

The new version to RIP adds many enhancements and improvements such as network printing and improved VDM workflow system

• iJetColor RIP & Workflow

An industry standard Navigator Harlequin RIP and Workflow, preloaded onto a computer, is included in the iJetColor Press Performance Bundle. The workflow provides a simple and easy-to-use interface for managing jobs printed on the iJetColor Press.



iJetColor Digital Inkjet Press Product Specifications	
RealWorld Production Speed	Up to 4,700 per hour (#10 Envelope, landscape feed)
Material Size	Min: 3" x 4 1/8" Max: 9.5" x 17"
Material Thickness	Up to 1/48" (0.5 mm, 430 gsm, 160# cover, 240# index)
Print Quality	Normal (1600 x 800 dpi @ 12 ips) Best (1600 x 1600 @ 6 ips)
Technology	Memjet Thermal Inkjet
Ink Capacity	Cyan (250 ml), Yellow (250 ml) Magenta (250 ml), Black (2 x 250 ml)
Print Area	8.5" x 17" with full bleed
Color Matrix	Up to 16.8 million colors
Feeder	Top load friction feeder built-in
Interface	USB or Ethernet
Dimensions	24" W x 18" H x 20" D
Weight	90 lbs
Electrical	110-240 VAC 60Hz/2A

• Color Matching

The Spot Color Matching application allows operators to easily match colors from an existing printed job. Color matches (RGB, PMS & CMYK) may be saved along with the job to make future print runs even faster. Adjusting the overall color of the entire job is quick and easy.

• Earth Friendly System

The iJetColor Press stands out from toner-based devices as a true "earth friendly" system with:

- Water-based inks - small carbon footprint
- No particle emission found unlike toner-based systems
- Complies with all global environmental standards (RHOS)

• Lowest Total Cost of Ownership

The iJetColor Press products takes advantage of Printware's complete service and open architecture supply plans providing customers the lowest total cost of ownership of any comparable solution on the market.